

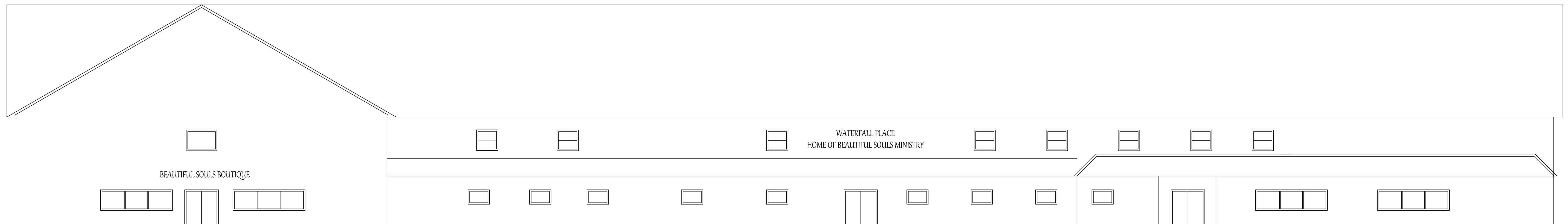


WATERFALL PLACE- 2ND FLOOR - APARTMENTS

TOTAL SQAURE FOOTAGE- 2ND FLOOR = 20,097

The second floor has short term apartments and long term apartments. The long term apartments are for the elderly souls. Our local community is in desperade need for affordable housing for elderly woman. Many of these women have lost their husbands and most of their life savings went to provide proper medical care. Widows deserve to live in a safe, loving, caring, giving, protected home without the worry of how they are going to pay their bills. The short term apartments are for women in need for up to one day and up to 6 months. This is for women who simply do not qualify for help with certain churches/organizations and have fallen through the cracks of the system. There are many great programs for alcoholism, drug addiction and physical abuse, though there are few programs for woman who have been married for years, raised their children and have lovingly taken care of everyone else in their precious family only to find out the rug of life has been pulled out from underneath them. SHOCK and FEAR sets in.

BSM will lovingly walk beside these women with our programs and lots of prayer to help them re-establish their precious lives once again.



WATERFALL PLACE- FRONT ELEVATION